



EPI OBSERVER

*Special Edition
July 2009*

FLORIDA DEPARTMENT OF
HEALTH

A Quarterly Newsletter from the Martin County Health Department
Division of Epidemiology

To Report A Disease Phone or Fax:

Phone # 772-221-4030 Fax # 772-223-2533

Martin County
Health Department
3441 SE Willoughby Blvd
Stuart, Florida 34994

Epidemiology Staff

Eric Ewald, MD, MPH
Medical Executive Director,
Ext 2247, Work cell# 772-215-3247

Karen Thomas, MD, MPH
Health Services Manager,
Ext 2130, Work cell# 772-260-0452

Linda Geist, RN, MPH
TB Program Coordinator,
Ext 2227, Work cell# 772-215-7300

Sydney Bailey, RN
Senior Registered Nurse,
Ext 2132, Work cell# 772-919-5972

Melissa Martinez
Medical Unit Specialist,
Ext 2243, Work cell# 772-260-4329

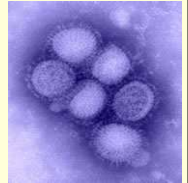
Jenneh Burphy, MPH
Syndromic Surveillance Specialist,
Ext 2214, Work cell# 772-260-4328

Kim Kossler, MPH, CPH
Human Services Program Analyst,
EPI OBSERVER Editor
Ext 2224, Work cell# 772-631-3042

Jackie Clarke
Health Services Representative,
Ext 2128, Work cell# 772-260-4325

NiShay Boone, BA
Health Services Representative,
Ext 2248, Work cell# 772-215-5451

NOVEL INFLUENZA A, H1N1



Novel H1N1 virus is a new influenza virus first detected in the United States in April 2009. The H1N1 virus spreads from person to person in the same way as seasonal flu, by an infected person coughing/sneezing or from a surface that is contaminated by respiratory droplets (i.e., door knobs) and then touching the eyes, mouth, or nose with unwashed hands. This new virus has quickly circulated around the globe, and a pandemic was declared by the World Health Organization in June 2009.

Structure and Characteristic of the Virus:

- * The H1N1 virus has 4 genetic components: human, avian (bird) and 2 variants found in swine (pigs).
- * The virus may live on surfaces between 2 to 8 hrs and is killed by heat and/or several germicides (chlorine, hydrogen peroxide, alcohol, and iodine based antiseptics).
- * Most reported secondary cases of illness occur within 48 hrs - 72 hrs.

Signs and Symptoms:

- * Symptoms are very similar to human seasonal influenza and may include fever, lethargy, cough, runny nose, sore throat, nausea, vomiting and diarrhea.
- * Deaths and severe illnesses due to the H1N1 virus have been mostly associated with pre-existing medical conditions, pregnancy, and/or morbid obesity.

Testing Guidelines:

- * Currently, almost all verified influenza cases are due to the novel influenza A (H1N1) virus.
- * Confirmed cases or clusters of H1N1 are reportable to the Health Department. The Florida Department of Health continues to monitor individual cases of influenza in special groups and populations including: deaths, hospitalized pregnant women, those with life threatening illness, and outbreaks of influenza or influenza-like-illness (ILI).
- * The State Public Health Laboratory will only process samples that meet the following criteria: patients with life threatening illnesses, patients being investigated by the health department as part of a cluster/outbreak, and patients from the Florida network of sentinel physicians. All other samples should be referred to a commercial lab for processing.

Treatment Guidelines:

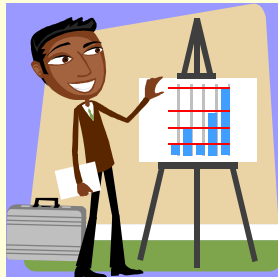
- * The Centers for Disease Control and Prevention (CDC) & the Florida Department of Health (FDOH) recommend early treatment with oseltamivir or zanamivir for those with influenza like illness who are ill enough to be hospitalized or have risk factors for severe outcomes, including pregnancy.
- * Treatment should be based on clinical diagnosis and should not wait for laboratory confirmation (CDC's detailed recommendations for treatment can be found at www.cdc.gov/h1n1flu).



Inside this Issue...

- ➔ Novel Influenza A, H1N1 Page 1 & Page 3
- ➔ Disease Incident Report (January – June 2009) Page 2
- ➔ Upcoming Events Page 4

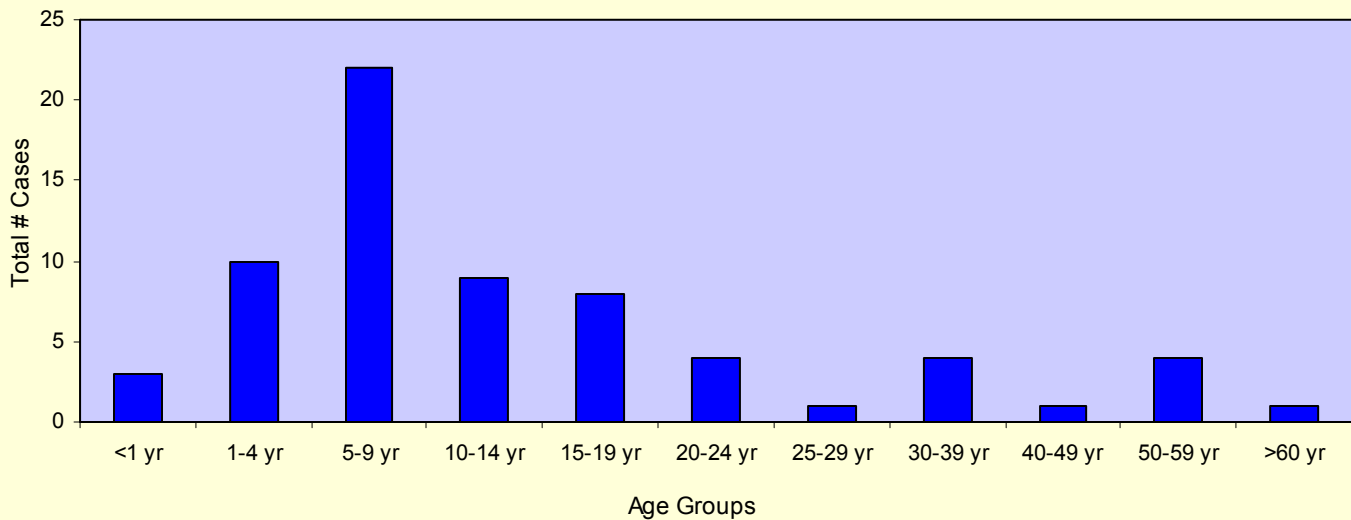
MERLIN Registry System, Disease Incidence Report
Martin County Health Department, Division of Epidemiology
 (January 1, 2009 – June 30, 2009)



	<u>Martin County</u> Cases Reported Year-to-Date		<u>State of Florida</u> Cases Reported Year-to-Date	
	2009	2008	2009	2008
Central Nervous System & Invasive Diseases:				
Haemophilus Influenzae (Invasive Disease)	1	0	145	66
Listeriosis	0	1	6	17
Meningococcal Disease	1	0	35	34
Strep Pneumoniae, Invasive Drug-Resistant	1	1	493	413
Strep Pneumoniae, Invasive Susceptible	4	2	448	406
Hepatitis:				
Hepatitis A	1	1	112	79
Hepatitis B (+HBsAg in pregnant women)	1	3	302	319
Hepatitis B, Acute	0	1	166	169
Hepatitis B, Chronic	10	4	2,395	1,904
Hepatitis C, Chronic	100	66	10,638	13,871
Vaccine Preventable Diseases:				
Pertussis	2	0	257	87
Varicella (Chickenpox)	10	10	856	1,080
Enteric Diseases:				
Campylobacteriosis	0	3	475	487
Cryptosporidiosis	1	2	139	159
Escherichia Coli, Shiga Toxin Producing	2	0	81	0
Enterohemorrhagic E. Coli (EHEC) 0157:H7	0	1	0	25
Giardiasis	2	3	877	562
Salmonellosis	14	12	1,913	1,847
Shigellosis	0	2	227	462
Vibrio, Other	0	1	2	4
Vector Borne & Zoonosis Diseases:				
Animal Bite, Post-Exposure Prophylaxis for Rabies	8	3	770	754
Lyme Disease	2	0	27	20
Rabid Animals	2	0	82	63
Other Diseases:				
Influenza due to novel or pandemic strains (lab confirmed)	44	0	1,213	0
Lead Poisoning	2	1	230	319
Total:	208	117	21,889	23,147

**MERLIN Registry System,
Martin County Health Department, Division of Epidemiology**

Total Number of State Lab Confirmed Novel Influenza A, H1N1 (Swine) Cases
in Martin County by Age Group (April 1, 2009 - July 31, 2009)



In Florida, confirmed influenza A, H1N1 cases have been generally among children, adolescents, and younger adults. Many older adults seem to have some existing immunity to the novel H1N1 virus. This is most likely as a result of exposure to flu viruses circulating before 1957 and possibly developing antibodies against the virus. The total number of State Lab Confirmed Novel Influenza A, H1N1 (Swine) Cases in Martin County from April 1, 2009 - July 31, 2009 was 67 cases and 77.6% of cases were among adolescents and children 19 years old and younger. It is unknown at this time how severe this influenza pandemic will become and how many infected people will develop severe complications from flu-related illness. However, it is likely that localized outbreaks will continue to occur throughout the summer and we will see novel H1N1 virus illness and death continue into the flu season.

The Martin County Health Department has been actively taking steps in preparation for the upcoming flu season including the following:

- * Stressing the importance of good hygiene to prevent the spread of the virus.
- * CDC Guidance information has been distributed to community partners (i.e., day care centers, schools, and summer camps).
- * Updated information including H1N1 testing and treatment guidelines has been distributed to local providers, laboratories and long term care facilities.
- * An informational letter on H1N1 was developed by the Martin County Health Department and the School District to be given to parents as the new school year begins.
- * Back to school education campaigns on germs & hygiene will be implemented by school health nurses.
- * Plans are in development for mass vaccine distribution when the H1N1 vaccine arrives.

The Novel H1N1 Vaccine:

- * The Novel H1N1 Vaccine is planned to be used along with the seasonal flu vaccine.
- * CDC's Advisory Committee on Immunization Practices (ACIP) recommended that when the vaccine becomes available, initial vaccination efforts should focus on the following key groups: all infants at least 6 months old through adults up to 24 years old, people who live with or care for children younger than 6 months old, all pregnant women, healthcare and emergency services personnel, and people 25 - 64 years old with health conditions associated with a higher risk of medical complications from influenza.

Prevent the Spread of Influenza

- * Stay home if you are sick!
(except if you need to seek medical care)
- * Wash your hands frequently!
- * Cover your cough!
- * Healthcare workers should follow respiratory hygiene/
cough etiquette, take standard & droplet infection control
precautions, and use the recommended PPE correctly if necessary.
- * Minimize contact and face to face time with sick individuals.
- * Clean and sanitize surfaces and commonly touched areas
(i.e., toys, door knobs, counter tops, computer keyboards, desks, etc.)



Thank you to all providers, laboratories and community partners
for your assistance and combined efforts
with the novel influenza A, H1N1 virus!

Upcoming Events

National Immunization Awareness Month

When: August 2009

National Center for Immunization and Respiratory Diseases
Centers for Disease Control and Prevention

www.cdc.gov/vaccines

World Rabies Day

When: September 28, 2009

Global Alliance for Rabies Control

www.worldrabiesday.org



For Additional Information on Upcoming Events Please Contact
Martin County Health Department, Division of Epidemiology
3441 SE Willoughby Blvd Stuart, Fl 34994

Phone: (772) 221-4030

Fax: (772) 223-2533